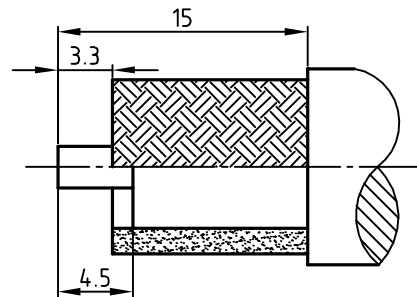
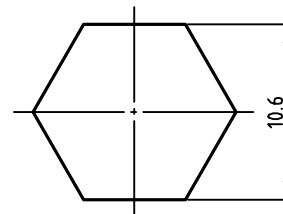


Recommended cable stripping dimensions



Crimping hex for ferrule



The connector interface meets QLF licensed QN series connector.

The product accord with RoHS directive.

1.Electrical Characteristics:

- Characteristic impedance: 50Ω
- Working voltage: 1000V(rms)
- Frequency range: 0-11GHz
- Dielectric withstanding voltage: 2500V(volts RMS)
- Contact resistance: Center contact: ≤1.5mΩ, Outer contact: ≤1.5mΩ
- Insulation resistance: ≥5000MΩ
- VSWR: ≤ 1.30(0-3GHz)

2.Noite:

- Match cable: LMR400;
- Center contact: Solder;
- Outer contact: Crimped;

3.Mechanical Characteristics:

- Mating Characteristics: Engagement Force:30N
- Disengagement Force:30N
- Interface Retention Force:≥450N
- Durability:100 mating cycles min.

4.Environmental Characteristics:

- Temperature Range:-40℃ to +125℃
- Corrosion:MIL-STD-202F,Method 101D,Condition B
- IP Rating interface:IP68

|     |                 |              |          |     |        |
|-----|-----------------|--------------|----------|-----|--------|
| 4   | Ferrule         | Copper alloy | Nickel   | 1   |        |
| 3   | Body            | Brass        | Cu Sn Zn | 1   |        |
| 2   | Insulators      | PTFE         | ---      |     |        |
| 1   | Center contacts | Brass        | Gold     | 1   |        |
| NO. | Title/Name      | Material     | Finish   | QTY | Remark |

|   |                   |
|---|-------------------|
| Customer Code.  | Customer part NO. |
| Unless otherwise specified tolerance  | Designed Date     |
| X.XX±0.1  | X±0.3             |
| X.X±0.2   | Ang.±1°           |
| This document is the property of Amphenol CNT ,reproduction or disclosure is forbidden unless authorized by Amphenol CNT. | Checked Date      |
|   | Approved Date     |
|   | J-1009 2013.08.08 |

|  |                |
|--|----------------|
| <b>Amphenol CNT</b>                        |                |
| <b>Customer Outline Drawing</b>            |                |
| All other sheets are for internal use only |                |
| Title                                      | QN-J400Y       |
| Part No.                                   | QN.1112010/R/1 |

|       |       |       |       |      |   |  |
|-------|-------|-------|-------|------|---|--|
| Scale | Scale | Sheet | Sheet | Rev. | 2 |  |
|-------|-------|-------|-------|------|---|--|